

H2 SERIES DIGITAL TURBINE FLOW METERS



Model No. : H2S-E
Model Type : Stainless steel



Model No. : H2S-E
Model Type : Stainless steel



Model No. : H2S-E
Model Type : Stainless steel



Model No. : H2S-E
Model Type : Stainless steel



Model No. : H2S-E
Model Type : Stainless steel



Model No. : H2S-E
Model Type : Stainless steel



Model No. : H2S-E
Model Type : Stainless steel

H2 SERIES DIGITAL TURBINE FLOW METERS



H2S stainless steel meters are available in a variety of materials, fitting sizes, and flow ranges. Applications include most chemicals, ammonium, plating solutions and fuel products.

Model No. : H2S-E

Model Type : Stainless steel

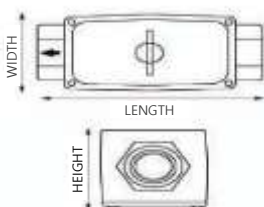
Features :

- Measurement for Chemical Industries.
- High accuracy & repeatability
- Easy to read LCD Back-light.
- Specific Gravity Correction (0.01-2.00)
- Display: Accumulated amount reset, accumulated flow display, instantaneous flow rate display, gallon or liter unit change, automatic integration
- Compact & Light weight
- Battery life: 4-5 years
- LCD auto on and off function

GENERAL SPECIFICATIONS

Housing Material	Stainless steel 316 or Aluminum	
Meter Size Available	1/2", 3/4", 1", 1-1/2", 2"	
Flow Range	1.2"	3.8 ~ 56.8 LPM (1 ~ 10 GPM)
	3/4"	7.6 ~ 113.6 LPM (2 ~ 20GPM)
	1"	18.9 ~ 284 LPM (5 ~ 50 GPM)
	1-1/2"	38.0 ~ 568 LPM (10 ~ 100 GPM)
	2"	76.0 ~ 1,136 LPM (2 ~ 200 GPM)
Accuracy	±0.5%	
Repeatability	±0.1%	
Pressure Rating	Stainless steel	102 bar (1,500 psi)
	Aluminum	21 bar (300 psi)
Operating Temperature	-40°C ~ +121°C	
Operating Temperature with Display	-10°C ~ +60°C	
Materials	Housing	Stainless steel or Aluminum
	Bearing	Ceramic
	Shaft	Tungsten Carbide
	Rotor	PVDF
	Rings	Stainless steel 316

Dimensions (mm / inches)



Sizes	Length	Height	Width
1/2"	107 / 4.2	46 / 1.8	51 / 2.0
3/4"	109 / 4.3	51 / 2.0	51 / 2.0
1"	114 / 4.5	56 / 2.2	51 / 2.0
1-1/2"	135 / 5.3	71 / 2.8	68 / 2.7
2"	160 / 3.6	81 / 3.2	84 / 3.3

H2 SERIES DIGITAL TURBINE FLOW METERS



The H2 Stainless Steel meters with sanitary clamp type can be used in in preprocess applications in food and beverage industries.

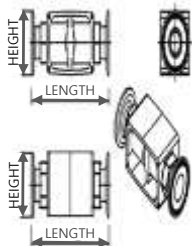
Model No. : H2S-SC
Model Type : Sanitary Clamp Type
Features :

- Sanitary clamp type stainless steel
- High accuracy & repeatability
- Easy-to-read LCD Back-light.
- Specific Gravity Correction (0.01~2.00)
- Display: Accumulated amount reset, accumulated flow display, instantaneous flow rate display, gallon or liter unit change, automatic integration
- Compact & Light weight
- Battery life: 4-5 years
- LCD auto on and off function

GENERAL SPECIFICATIONS

Fitting Type	Sanitary Clamp	
Housing Material	Stainless steel 316	
Meter Size Available	1/2", 3/4", 1", 1-1/2", 2"	
Repeatability	±0.1%	
Pressure Rating	102 bar (1,500 psi)	
Operating Temperature	-40°C ~ +121°C	
Operating Temperature with Display	-10°C ~ +60°C	
Materials	Housing	Stainless steel 316
	Bearing	Ceramic
	Shaft	Tungsten Carbide
	Rotor	PVDF
	Rings	Stainless steel 316

Dimensions (mm / inches)



Model	Length	Height	Width
H2S-05SC	107 / 4.2	46 / 1.8	51 / 2.0
H2S-07SC	109 / 4.3	51 / 2.0	51 / 2.0
H2S-10SC	114 / 4.5	56 / 2.2	51 / 2.0
H2S-15SC	135 / 5.3	71 / 2.8	68 / 2.7
H2S-20SC	160 / 3.6	81 / 3.2	84 / 3.3

H2 SERIES DIGITAL TURBINE FLOW METERS



H2 stainless steel meter available with a variety of flanges can be quickly installed in-line. Choose Flange ANSI#150,300, JIS 10K, 20K, 40K, DIN PN 16bar, 25bar, 40bar.

Model No. : H2S-F
Model Type : Flange Type

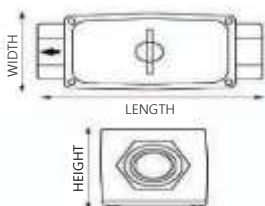
Features :

- Measurement for Chemical Industries
- High accuracy & repeatability
- Easy-to-read LCD Back-light.
- Specific Gravity Correction (0.01~2.00)
- Display: Accumulated amount reset, accumulated flow display, instantaneous flow rate display, gallon or liter unit change, automatic integration
- Compact & Light weight
- Battery life: 4-5 years
- LCD auto on and off function

GENERAL SPECIFICATIONS

Fitting Type	ANSI#150,300, JIS 10K, 20K, 40K, PN 16bar, 40bar.	
Housing Material	Stainless steel 316	
Meter Size Available	1/2", 3/4", 1", 1-1/2", 2"	
Repeatability	±0.1%	
Pressure Rating	102 bar (1,500 psi)	
Operating Temperature	-40°C ~ +121°C	
Operating Temperature with Display	-18°C ~ +60°C	
Materials	Housing	Stainless steel 316
	Bearing	Ceramic
	Shaft	Tungsten Carbide
	Rotor	PVDF
	Rings	Stainless steel 316

Dimensions (mm / inches)



Model	Length	Height	Width
H2S-05F	107 / 4.2	46 / 1.8	51 / 2.0
H2S-07F	109 / 4.3	51 / 2.0	51 / 2.0
H2S-10F	114 / 4.5	56 / 2.2	51 / 2.0
H2S-15F	135 / 5.3	71 / 2.8	68 / 2.7
S20F	160 / 3.6	81 / 3.2	84 / 3.3

H1 SERIES (Economy type) DIGITAL TURBINE FLOW METERS



H2 stainless steel meter available with a variety of flanges can be quickly installed in-line. Choose Flange ANSI#150,300, JIS 10K, 20K, 40K, DIN PN 16bar, 25bar, 40bar.

Model No. : H1

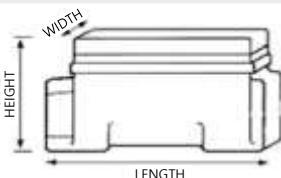
Model Type : Economy Aluminum Type

Features :

- A unique package that combines a turbine and LCD into a compact meter independently and economically
- Light and compact design, easy to install
- Easy-to-read LCD Back-light.
- Specific Gravity Correction (0.01~2.00)
- Display: Accumulated amount reset, accumulated flow display, instantaneous flow rate display, gallon or liter unit change, automatic integration
- Battery life: 4-5 years
- LCD auto on and off function

GENERAL SPECIFICATIONS

Design Type	Turbine	
Housing Material	Aluminum	
Fitting Size	1 inch	
Fitting Type	NPT	
Accuracy	±0.5 of reading	
Repeatability	±0.2%	
Flow Range (LPM)	11~190 LPM (Max. 250 LPM)	
Flow Range (GPM)	3~50 GPM (Max. 66 GPM)	
Pressure Rating	21 bar (300 psi)	
Operating Temperature	-40°C ~ +121°C	
Operating Temperature with Display	-18°C ~ +60°C	
Materials	Housing	Stainless steel 316
	Bearing	Ceramic
	Shaft	Tungsten Carbide
	Rotor	PVDF
	Rings	Stainless steel 316
Wrench Flat Size	28 mesh	
Weight	0.61 Kg (1.35 lbs)	
Dimensions (mm / inches)		



Model	H100
Length	102 mm (4.0 inches)
Height	63 mm (2.5 inches)
Width	51 mm (2.0 inches)

H2 SERIES DIGITAL TURBINE FLOW METERS



H2A Aluminum Meters are designed to be compact & light weight. Applications are best suitable for petroleum based products. F2A Series are available to ISP or NPT fittings.

Model No. : H2A-E

Model Type : Aluminum Type

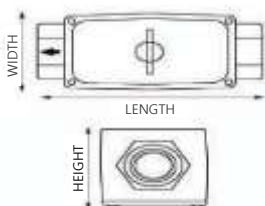
Features :

- Small turbine flow meter with strong durability by high pressure
- Easy-to-read LCD Back-light.
- Specific Gravity Correction (0.01~2.00)
- Display: Accumulated amount reset, accumulated flow display, instantaneous flow rate display, gallon or liter unit change, automatic integration
- Compact & Light weight
- Battery life: 4-5 years
- LCD auto on and off function

GENERAL SPECIFICATIONS

Fitting Type	NPT or ISO)Female)	
Housing Material	Aluminum	
Meter Size Available	1/2", 3/4", 1", 1-1/2", 2"	
Repeatability	±0.1%	
Pressure Rating	21 bar (300 psi)	
Operating Temperature	-40°C ~ +121°C	
Operating Temperature with Display	-18°C ~ +60°C	
Materials	Housing	Stainless steel 316
	Bearing	Ceramic
	Shaft	Tungsten Carbide
	Rotor	PVDF
	Rings	Stainless steel 316

Dimensions (mm / inches)



Model	Length	Height	Width
H2A-05	107 / 4.2	46 / 1.8	51 / 2.0
H2A-07	109 / 4.3	51 / 2.0	51 / 2.0
H2A-10	114 / 4.5	56 / 2.2	51 / 2.0
H2A-15	135 / 5.3	71 / 2.8	68 / 2.7
H2A-20	160 / 3.6	81 / 3.2	84 / 3.3

H2 SERIES DIGITAL TURBINE FLOW METERS



Model No. : H2S-SE
Model Type : Separation Type
Features :

- Connector : Hubble PG7
- Signal Type: Open Collector (NPN)
- Power : External 9 to 36 Vdc, approx. 1mA
- Connection: Three wires or two
- Frequency: 0 to 750 Hz
- Cable: 3m (10ft), Belden#9636

Module provides unscaled, amplified, digital signal capable of transmission up to 5,000 ft. There is no need for additional signal conditioning or amplification devices to achieve the desired digital signal. Use on F2 "Turbine Only" model.

This Module is factory assembled or Open Collector signal output and operates from an external 9 to 35 volts power source. By changing terminal connections and adding a battery kit, the module provides a self-powered 6-volt Square Wave Signal.

GENERAL SPECIFICATIONS

Housing Material	Stainless steel 316 or Aluminum	
Meter Size Available	1/2", 3/4", 1", 1-1/2", 2"	
Flow Range	1/2"	3.8 ~ 56.8 LPM (1 ~ 10 GPM)
	3/4"	7.6 ~ 113.6 LPM (2 ~ 20GPM)
	1"	18.9 ~ 284 LPM (5 ~ 50 GPM)
	1-1/2"	38.0 ~ 568 LPM (10 ~ 100 GPM)
	2"	76.0 ~ 1,136 LPM (2 ~ 200 GPM)
Accuracy	±0.5%	
Pressure Rating	21 bar (300 psi)	
Operating Temperature	-40°C ~ +121°C	
Operating Temperature with Display	-18°C ~ +60°C	
Materials	Housing	Stainless steel 316
	Bearing	Ceramic
	Shaft	Tungsten Carbide
	Rotor	PVDF
	Rings	Stainless steel 316
Repeatability	±0.1%	

H2 SERIES SENSOR TURBINE FLOW METERS



Model No. : H2S-S
Model Type : Sensor Type
Features :

- Measurement for Chemical Industries
- High accuracy & repeatability
- Signal Type: Open Collector (NPN)
- Power supply : 12~24 VDC
- Connection: Three wires
- Frequency: 0 to 750 Hz
- Cable: 1m, 2m, 3m Belden#9636

H2S stainless steel meters are available in a variety of materials, fitting sizes, and flow ranges. Applications include most chemicals, ammonium, plating solutions and fuel products.

GENERAL SPECIFICATIONS

Housing Material	Stainless steel 316 or Aluminum	
Meter Size Available	1/2", 3/4", 1", 1-1/2", 2"	
Flow Range	1/2"	3.8 ~ 56.8 LPM (1 ~ 10 GPM)
	3/4"	7.6 ~ 113.6 LPM (2 ~ 20GPM)
	1"	18.9 ~ 284 LPM (5 ~ 50 GPM)
	1-1/2"	38.0 ~ 568 LPM (10 ~ 100 GPM)
	2"	76.0 ~ 1,136 LPM (2 ~ 200 GPM)
Accuracy	±0.5%	
Pressure Rating	21 bar (300 psi)	
Operating Temperature	-40°C ~ +121°C	
Operating Temperature with Display	-18°C ~ +60°C	
Materials	Housing	Stainless steel 316
	Bearing	Ceramic
	Shaft	Tungsten Carbide
	Rotor	PVDF
	Rings	Stainless steel 316
Repeatability	±0.1%	